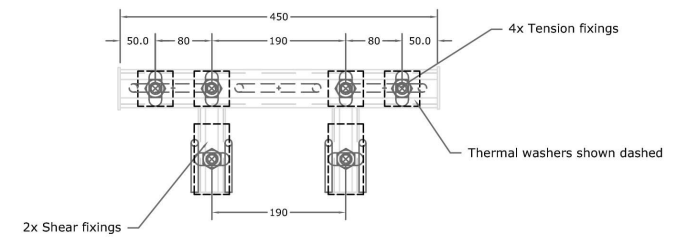
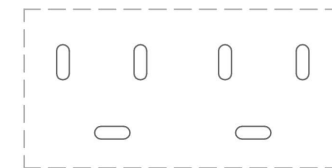


TYPICAL CROSS SECTION THROUGH BALCONY CONNECTION (BALCON B4)



TYPICAL ELEVATION on BALCON B4 CONNECTION



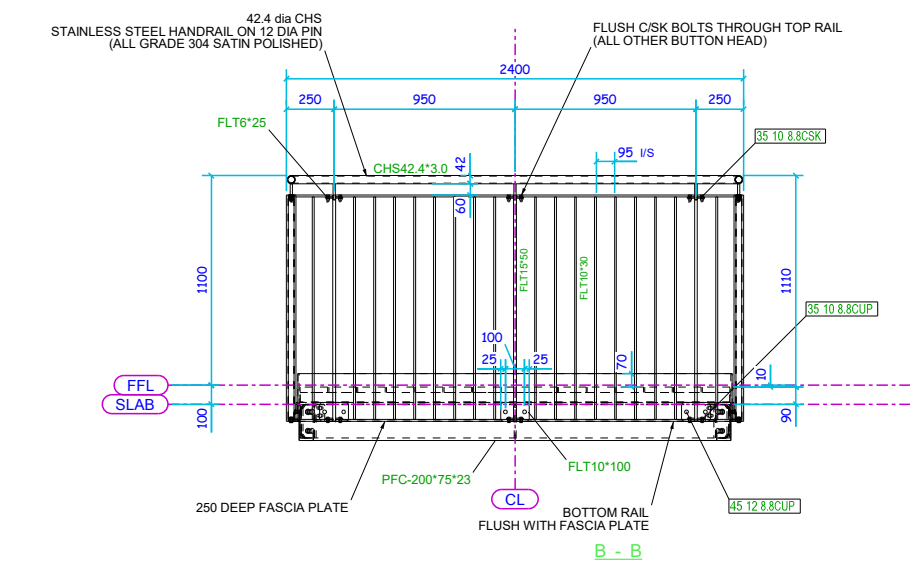
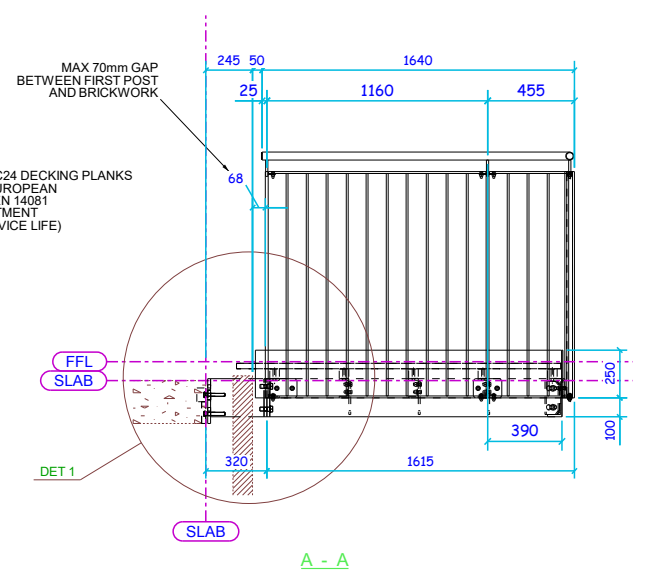
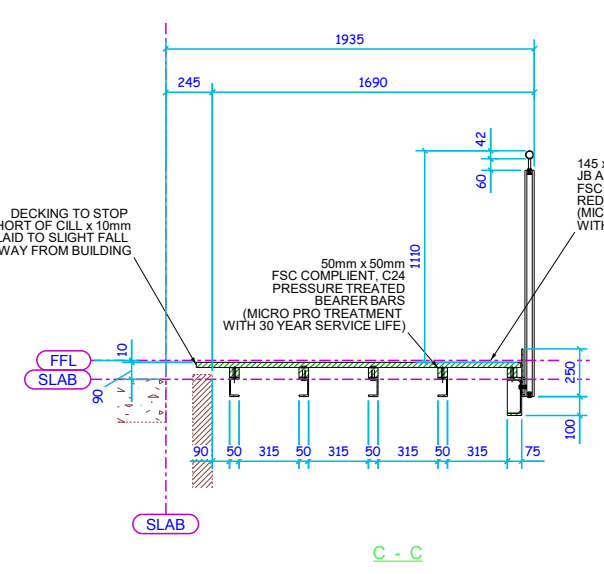
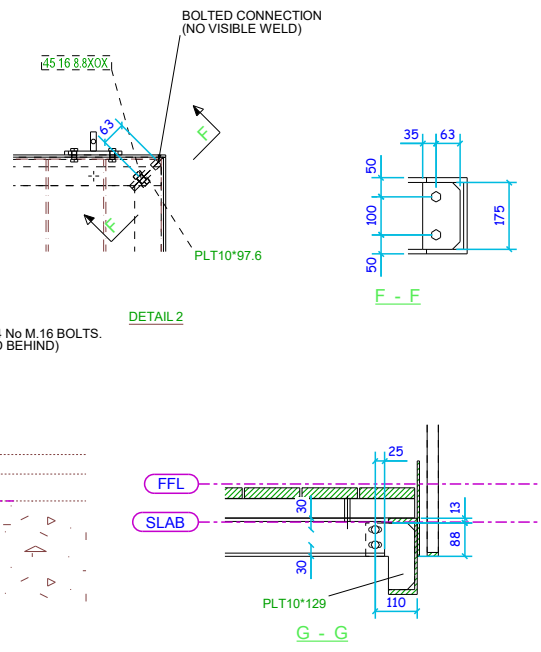
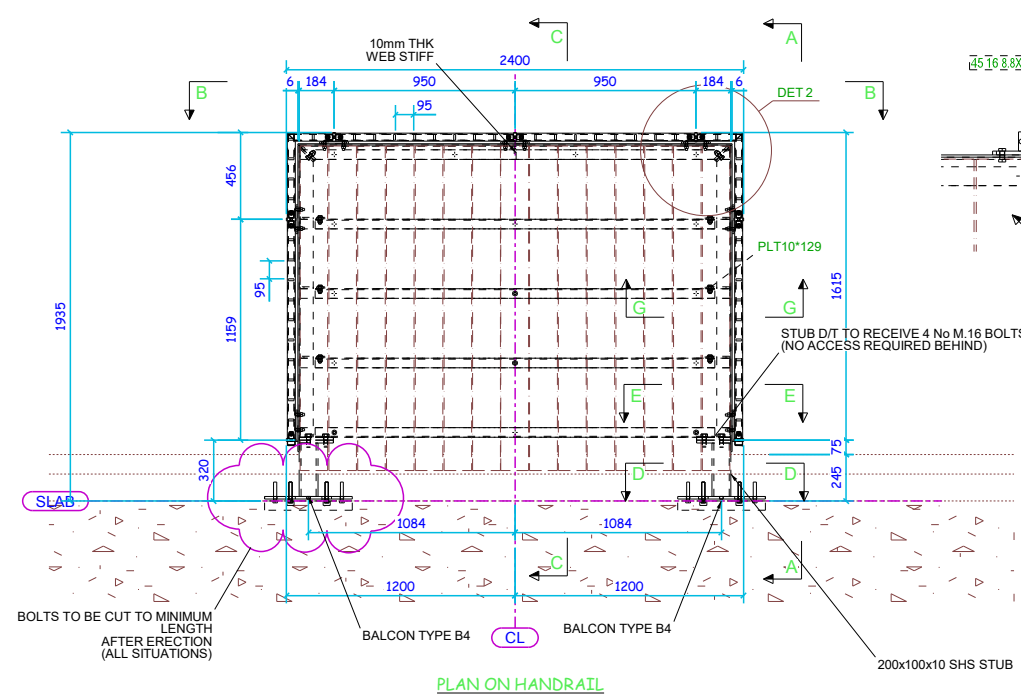
SLOT ORIENTATION
IN STUB ENDPLATE

A	REVISED TO COMMENTS & ISSUED FOR CON	DC	27.11.2017	KR	27.11.2017
0	FIRST ISSUE	DC	18.10.2017	KR	18.10.2017
REV MARK	DESCRIPTION	By	Date	By	Date
		CREATED		CHECKED	

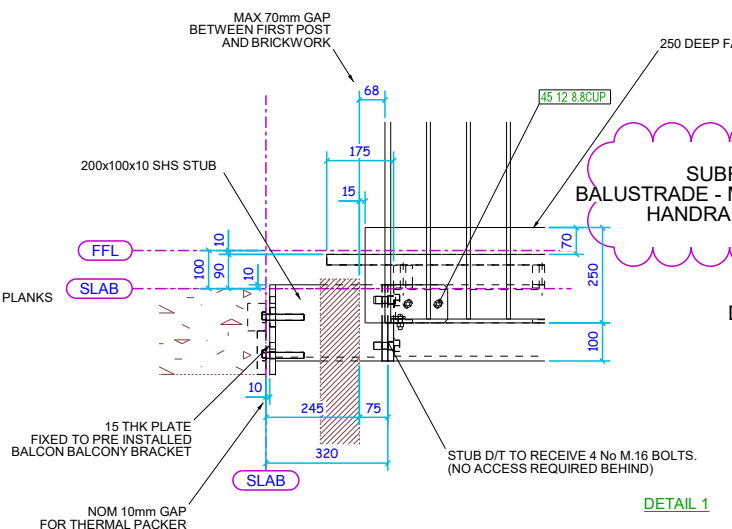
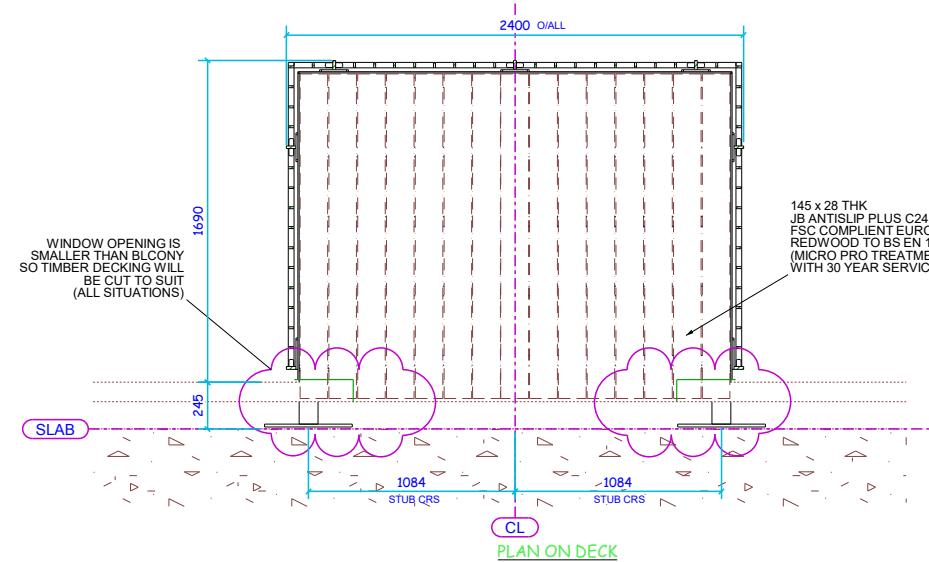
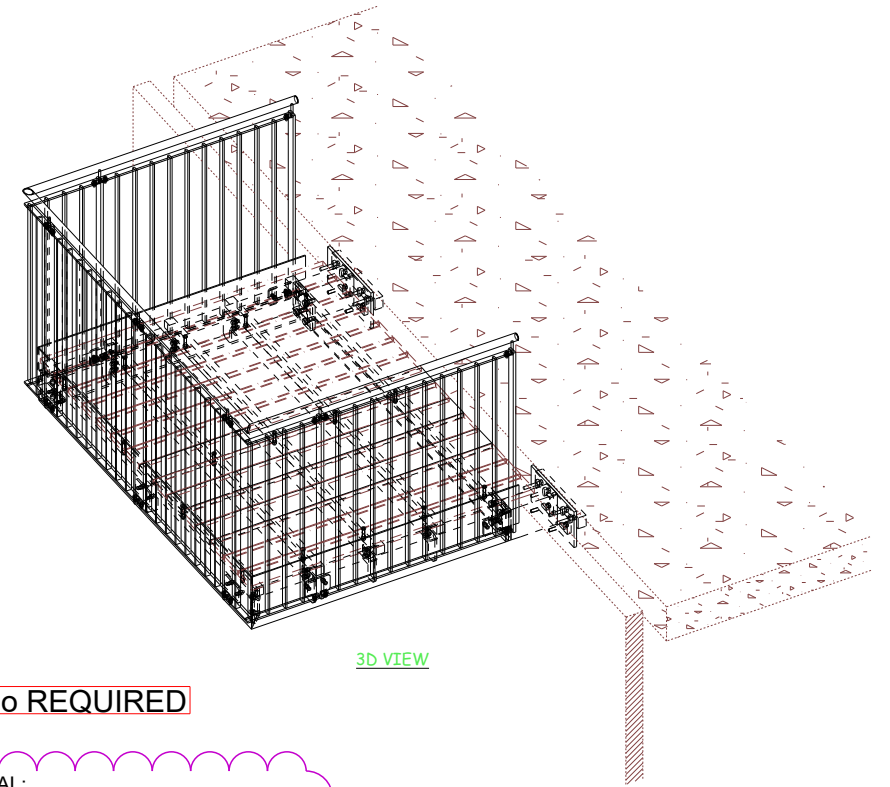
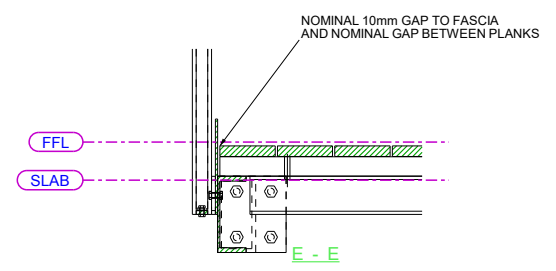
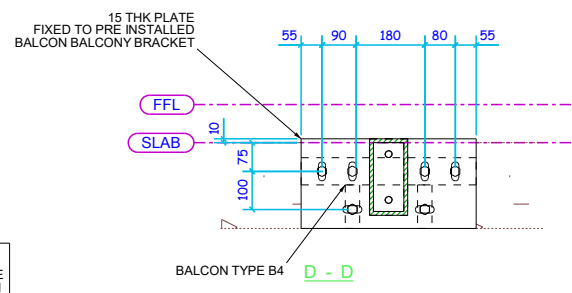
THORP ARCH TRADING ESTATE
WETHERBY LS23 7FL Tel: 01937843485



DRAWING TITLE	BALCON CONNECTION TYPE B4
CONTRACT	HUNGATE BLOCK F
MODELLED BY	Dougan
ISSUE DATE	
CONTRACT NO	852
SCALE	NTS
DRAWING No	852-BALCON B4 (CON)
REVISION No.	0



GENERAL NOTE
ALL BOLTS / DRILLED HOLES
TO BE PROTECTED TO ENSURE
AREA'S DON'T RUST OR STAIN



34 No REQUIRED

MATERIAL:
SUBFRAME - MILD STEEL (MIN GRADE S275) GALVANISED.
BALUSTRADE - MILD STEEL (MIN GRADE S275) GALVANISED THEN PPC RAL9007.
HANDRAIL - STAINLESS STEEL GRADE 304 (SATIN POLISH FINISH).

DESIGN LOAD 0.74kN/Metre
STRUCTURAL STABILITY
CONFIRMED BY ARC ENGINEERS.
DESIGNED IN ACCORDANCE WITH BS EN 1991-1-1

STEELWORK TO HAVE NO
VISIBLE BRANDING OR MARKINGS

REV MARK	DESCRIPTION	By	Date	By	Date
C	UPDATED TO ARCH COMMENTS DATED 12/01/18	DC	08.03.2018	KR	08.03.2018
B	REVISED TO WA ARCH COMMENTS AND ISSUED FOR CONSTRUCTION	DC	29.12.2017	KR	29.12.2017
A	DRAWING UPDATED AND REVISED TO ARCHITECTS COMMENTS	DC	30.10.2017	KR	30.10.2017
0	FIRST ISSUE	DC	29.09.2017	KR	29.09.2017

212 THORP ARCH TRADING ESTATE WETHERBY LS23 7FL Tel: 01937 843485		METFABS making metal - work	
DRAWING TITLE	BALCONY B0 GENERAL ARRANGEMENT	ISSUE DATE	
CONTRACT	HUNGATE BLOCK F	SCALE	1:10 1:20
MODELLED BY	Dougan	REVISION No.	C
CONTRACT NO	852		
DRAWING No	852-B0-SHT 2 (CON)		